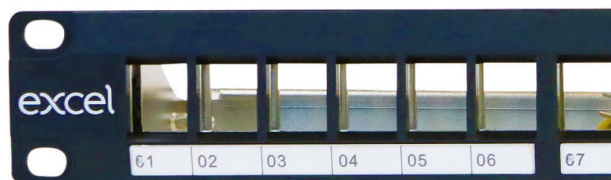


Excel Unloaded 24 Port Keystone Patch Panel Frame 1U Black

Item Code: 100-026

excel
without compromise.



✕ Choice of category

✕ Available in black or chrome

✕ Choice of port density

✕ Earthing kit, cage nuts and mini cable ties included

✕ Fast fit rear cable management

✕ For Screened and Unscreened systems

Product Overview

Excel keystone jack patch panel frames are available for mounting of the range of screened and unscreened Excel toolless keystone jacks.

A rear management tray with purposely designed cable tie positions, is supplied with each panel which is fitted without the need for any tools or fixings by simply snapping it into place.

Product Specifications

Feature	Values
Suitable for number of outlets / modules	24
Category	Keystone Jack dependent
Number of rack units (RU)	1
Colour	Black
Mounting method	19 inch mounting
Height	44 mm
Width	483 mm
Depth	155 mm

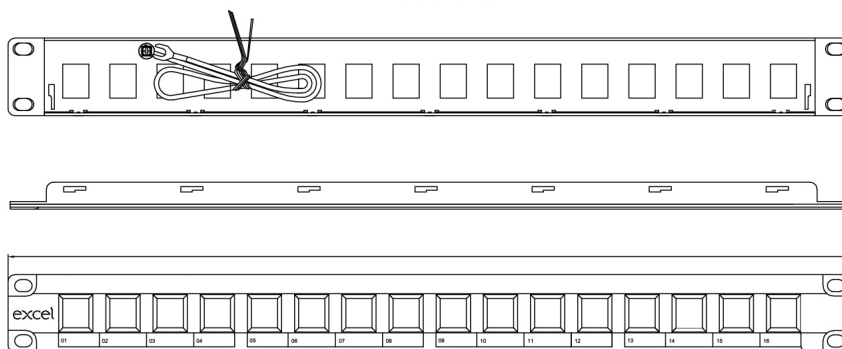
Excel Unloaded 24 Port Keystone Patch Panel Frame 1U Black

Item Code: 100-026

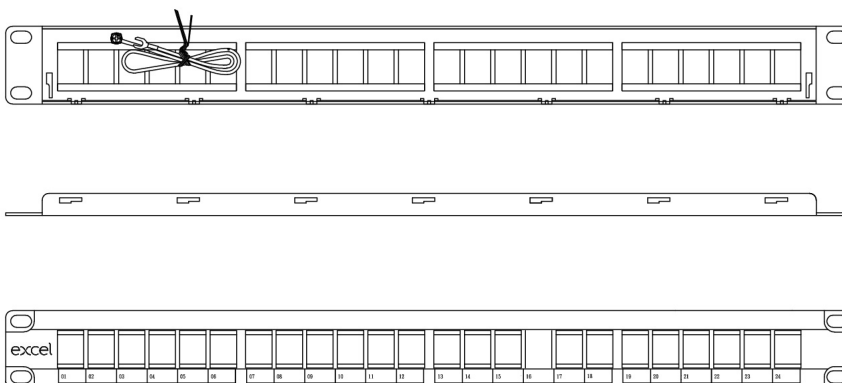


Product drawing

100-025



100-026



Standards

Applicable standard	Detail
RoHS	Compliant to the Restriction of Hazardous Substances
UL-94-V-0	Burning stops within 10 seconds after two applications of ten seconds each of a flame to a test bar. NO flaming drips are allowed.
WFD	Compliant to Waste Framework Directive
SCIP	Compliant - Does Not Contain Substances of Concern in Products

Excel Unloaded 24 Port Keystone Patch Panel Frame 1U Black

Item Code: 100-026



Part Number Table

Part Number	Description
100-025	Excel Unloaded 16 Port Keystone Patch Panel Frame 1U - Black
100-026	Excel Unloaded Keystone Patch Panel Frame - 24-port, 1U - Black



KKMtech Sp. z o.o. | ul Santocka 39 71083 Szczecin POLAND

T: +48 91 462 44 12 | E: biuro@kkmtech.pl | W: www.kkmtech.pl