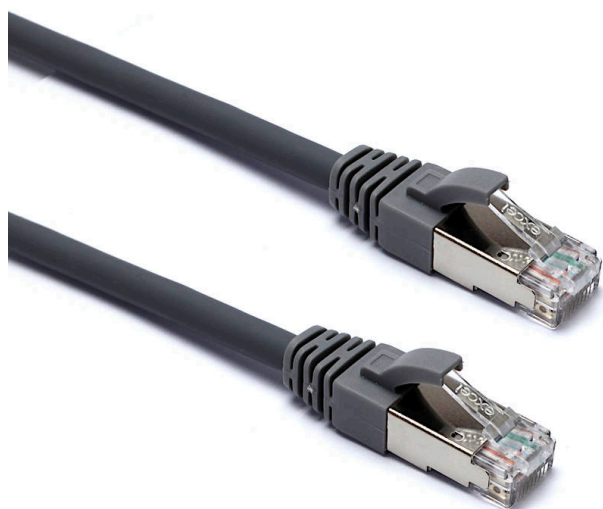


Excel Cat6A Patch Lead S/FTP Shielded LSOH Blade Booted 0.3m Grey (10-Pack)

Item Code: 106-001

excel
without compromise.



✘ Category 6a

✘ Screen braid outer with individual foil tape screen

✘ Backward compatible

✘ T568B wiring

✘ Blade style "slimline" moulded strain relief boot with clip protector

✘ LSOH outer sheath

Product Overview

Excel Category 6a S/FTP patch leads are manufactured and tested to ISO 11801, EN 50173 & TIA/EIA 568 requirements for patch cord assemblies and provide optimum performance levels for structured cabling installations.

Product Specifications

Feature	Values
Cable type	S/FTP
Category	6A (IEC)
Length	0.3 m
Type of connector connection 1	RJ45 8(8)
Type of connector connection 2	RJ45 8(8)
Outer sheath colour	Grey
Strain relief boot	Moulded-on
Strain relief boot colour	Grey
Flame retardant version	Yes
Halogen free	Yes
Cable construction	1x4

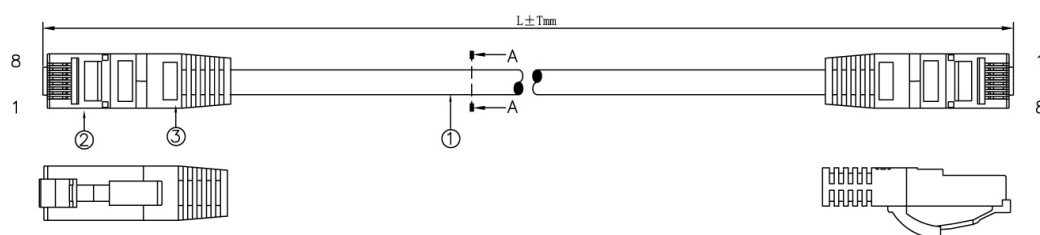
Excel Cat6A Patch Lead S/FTP Shielded LSOH Blade Booted 0.3m Grey (10-Pack)

Item Code: 106-001



AWG-size	26
Pin assignment	1:1

Product drawing



Standards

Applicable standard	Detail
ISO/IEC 11801-1:2017	Information technology - Generic cabling for customer premises: Part 1 General Requirements
EN 50173-1:2018	Information technology. Generic cabling systems - General requirements
ANSI/TIA 568-2.D	Balanced Twisted-Pair Telecommunications Cabling and Components Standards
IEC 61156-5:2009+AMD1:2012 CSV	Multicore and symmetrical pair/quad cables for digital communications - Part 5: Symmetrical pair/quad cables with transmission characteristics up to 1 000 MHz - Horizontal floor wiring - Sectional specification
RoHS	Compliant to the Restriction of Hazardous Substances
WFD	Compliant to Waste Framework Directive
SCIP	Compliant - Does Not Contain Substances of Concern in Products

Part Number Table

Part Number	Description
106-001	Excel Cat6A Patch Lead S/FTP Shielded LSOH Blade Booted 0.3m Grey (10-Pack)
106-002	Excel Cat6A Patch Lead S/FTP Shielded LSOH Blade Booted 0.5m Grey

Excel Cat6A Patch Lead S/FTP Shielded LSOH Blade Booted 0.3m Grey (10-Pack)

Item Code: 106-001



(10-Pack)

106-003	Excel Cat6A Patch Lead S/FTP Shielded LSOH Blade Booted 1m Grey
106-004	Excel Cat6A Patch Lead S/FTP Shielded LSOH Blade Booted 2m Grey
106-005	Excel Cat6A Patch Lead S/FTP Shielded LSOH Blade Booted 3m Grey
106-006	Excel Cat6A Patch Lead S/FTP Shielded LSOH Blade Booted 5m Grey
106-007	Excel Cat6A Patch Lead S/FTP Shielded LSOH Blade Booted 10m Grey



KKMtech Sp. z o.o. | ul Santocka 39 71083 Szczecin POLAND
T: +48 91 462 44 12 | E: biuro@kkmtech.pl | W: www.kkmtech.pl